

Floor plans and specification

Open plan flexible floor space.
Suspended ceiling and LG7 lighting throughout.
Double-height entrance / reception area.

Services installation: 1:8m²

Floor loading: 3.3kN/m²

Floor to ceiling: 2850mm

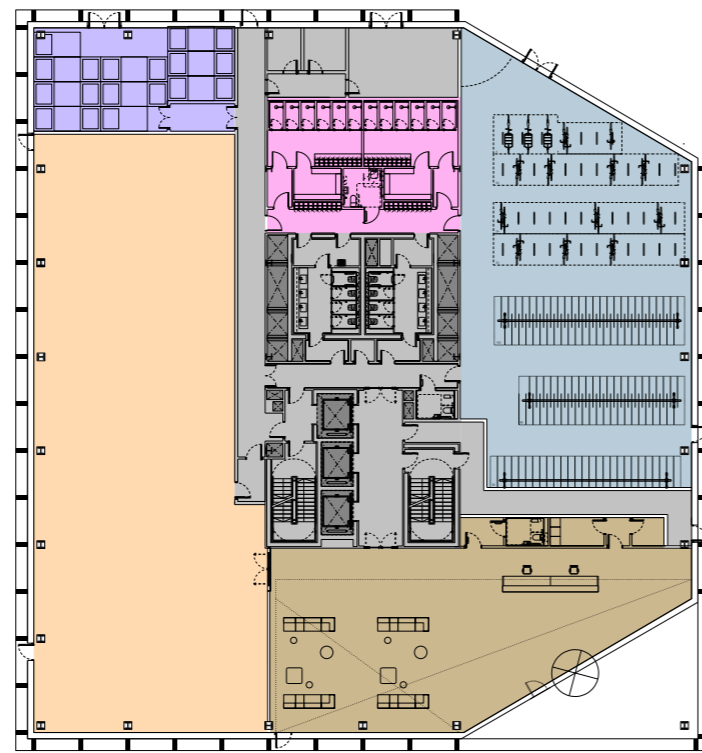
Column-free floor plates

BREEAM: Excellent

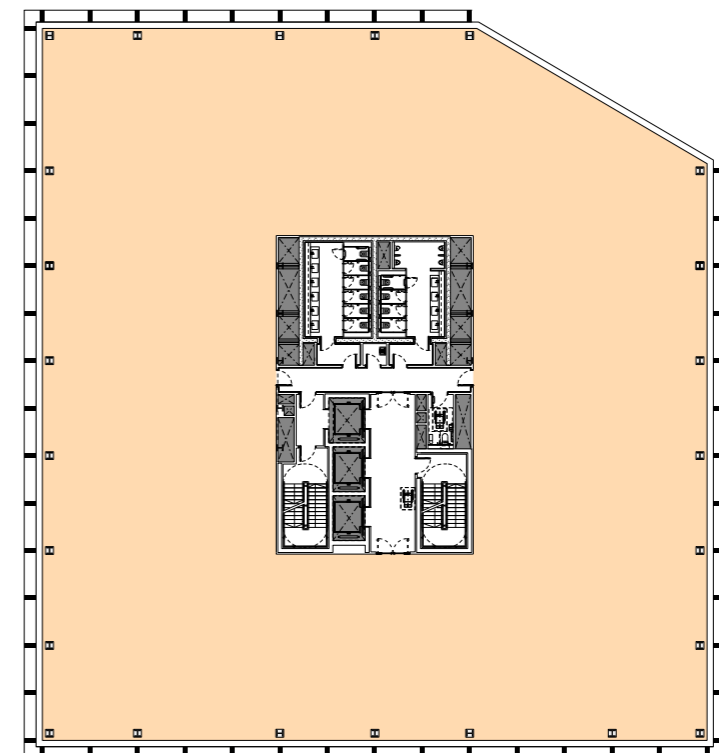
WIRED score: Platinum

EPC rating: A

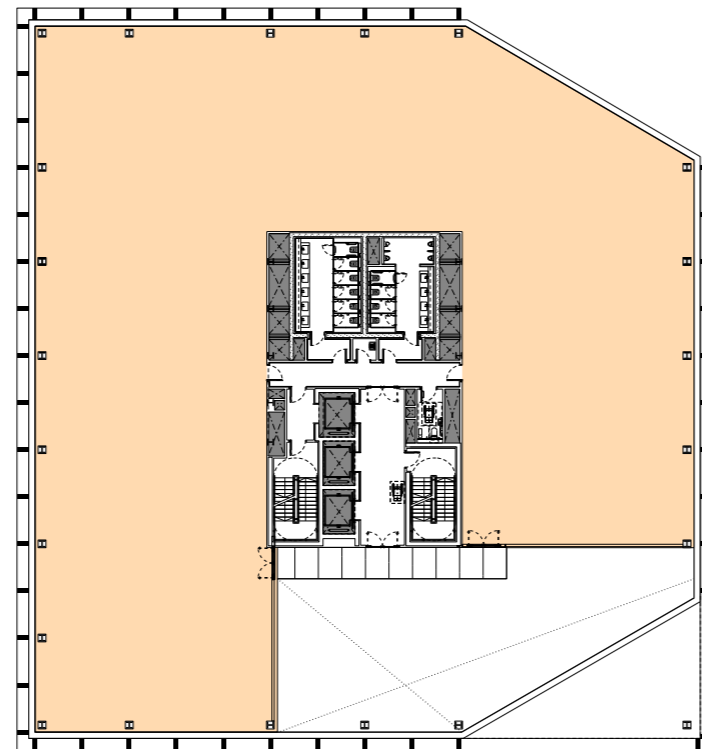
Level	ft ² (net)	m ² (net)
5	15,532	1,443
4	16,964	1,576
3	16,813	1,562
2	16,813	1,562
1	13,606	1,264
G	5,694	529
Total (excl Reception)	85,422	7,936
Reception	3,014	280



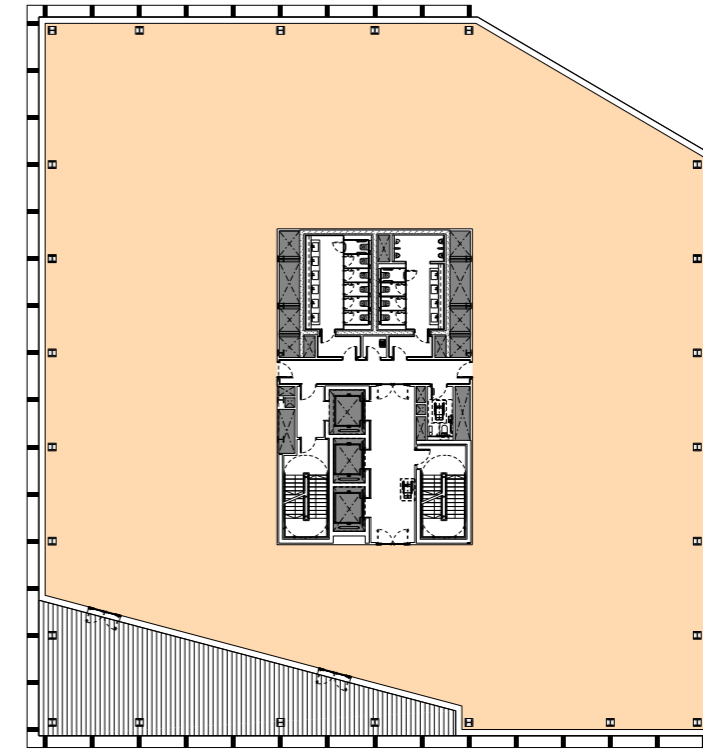
Ground Floor



Additional typical floorplate
(without terrace)



First Floor



Additional typical floorplate
(with terrace)